

**EN WHY-KP**

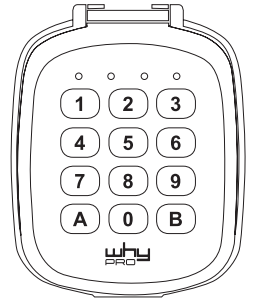
**SELF-LEARNING UNIVERSAL WIRELESS KEYPAD**  
Cod. WHITE 8991007 • BLACK 8991008

**INSTRUCTION MANUAL AND WARNINGS**

For your safety, please read manual instruction carefully before beginning installation.

**TECHNICAL SPECIFICATIONS**

Power supply: 1 x CR2450 3V  
Storable codes: up to 12  
Users: 1 master + up to 11 standard  
Frequency: Multy AM/FM  
Code types: fixed and rolling code  
Working temperature: -20°/+60°C  
Size: 98x73x43 mm



**USER MANUAL**

The **MASTER PIN** is unique and is necessary to memorize the codes to be transmitted from the Keypad and to manage the different **USER PIN**'s. **PLEASE NOTE: MASTER PIN is factory pre-set to 1111.**

**HOW TO CHANGE THE MASTER PIN**

Enter the current **MASTER PIN** and hold the last number entered (1 in case of first modification) for at least 6 seconds.

The **RED** and **GREEN** LED's will illuminate constantly and the buzzer will emit a short sound.

Now press "0" button, the **RED** LED remains on while the **GREEN** LED begins to flash slowly.

At this point enter the new desired **MASTER PIN** by using between 4 and 8 characters (note that you can use both numbers between 0-9 and letters A-B).

If the PIN is usable the **GREEN** LED will become constant while the **RED** LED turns off.

Enter the new **Master PIN** a second time to confirm. The **RED** LED will illuminate constantly while the **GREEN** LED flashes slowly. If the password matches the first one entered then the **RED** LED stays the same while the **GREEN** LED will flash faster.

**USER PIN**

There can be up to 11 individual **USER PIN**'s stored in memory.

To set or modify a **USER PIN**, enter the **MASTER PIN** and hold the last number entered for at least 6 seconds.

The **RED** and **GREEN** LED's will illuminate constantly and the buzzer will emit a short sound.

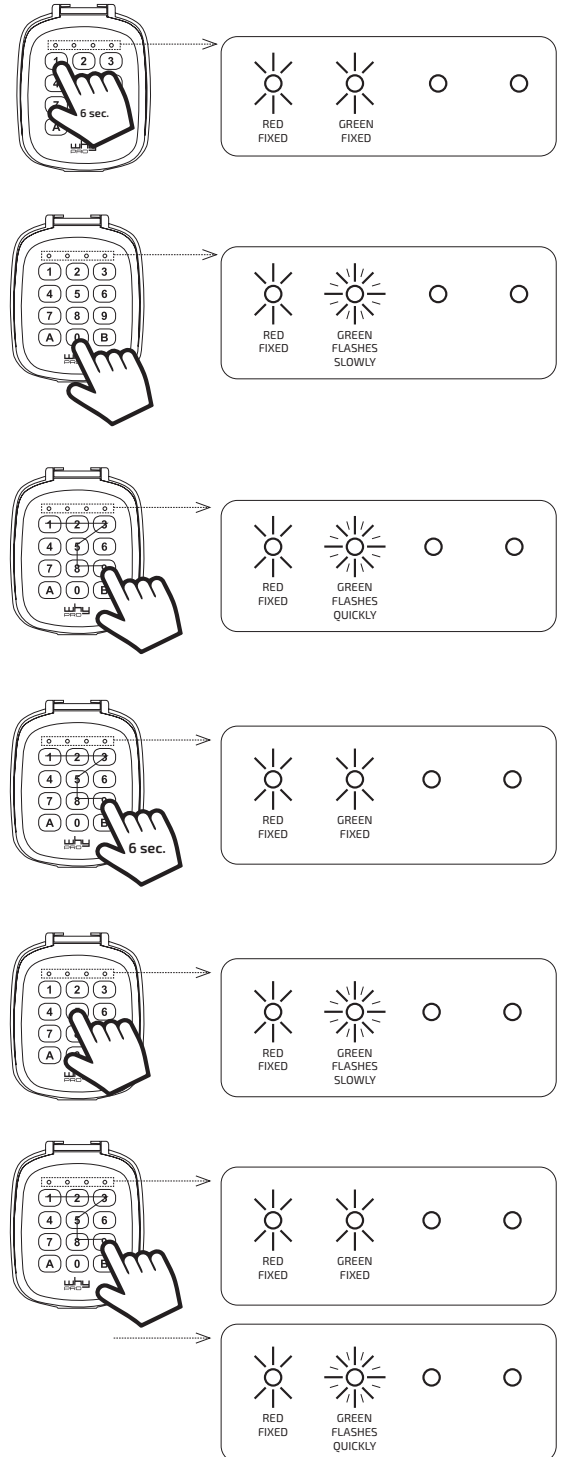
Now enter a reference key for the new **USER**. You can use any unused key from 1-9 or A-B. The "0", zero key is reserved for the **MASTER USER**. The **RED** LED will illuminate constantly and the **GREEN** LED will begin flashing slowly.

At this point enter the newly chosen **USER PIN**. The PIN must be between 4-8 characters in length, you may use any combination of numbers and letters for this.

If the PIN is accepted, the **RED** and **GREEN** LED's will illuminate constantly. Now you can choose which functions (previously set) are accessible to this **USER PIN** by selecting them one at a time. If no function is selected within 10 seconds, all functions will be enabled automatically.

Now the **RED** LED will illuminate constantly while **GREEN** LED begins flashing rapidly to indicate that the procedure has been successfully accepted.

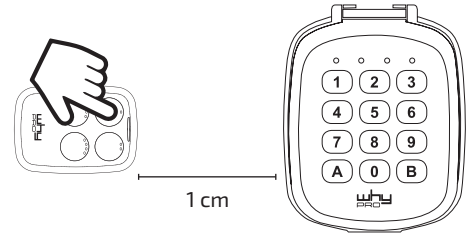
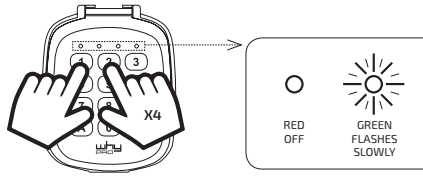
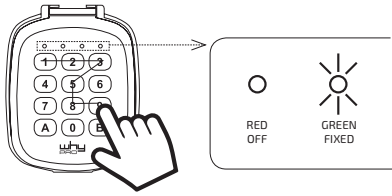
We strongly recommend that you take note of the **MASTER PIN** and keep it in a safe place in order to always maintain access to the system.



**RADIO CODES SETTING**

To check and/or download the updated complete compatibilities list please visit [why-evo.com](http://why-evo.com)

1. Enter the MASTER PIN. The GREEN LED will illuminate constantly.
2. Press and hold button 1 and simultaneously press button 2 four times, then release both.
3. THE GREEN LED will begin to flash slowly which indicates it is ready for a code to be received. Place the source remote control about 1cm away from the Keypad and press the button you wish to copy.



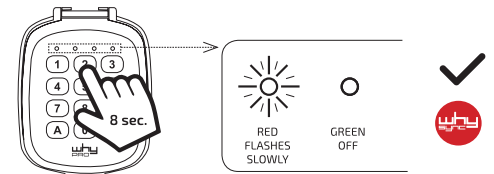
- If the RED LED starts flashing quickly, it means the code has been correctly received. Press and hold any button on the keypad where you want this code to be stored (1-0 or A-B), the RED LED will change to constant, when the RED LED turns off, the procedure is complete. Release the button.



- If the GREEN LED gives a double flash, it is the indication that to complete the procedure the Keypad also requires the SEED CODE from the source remote control (Please visit [why-pro.com](http://why-pro.com) for further details).

Now enter the MASTER PIN and then the button where the code has been stored, and:

- If the desired automation starts working the procedure is successfully complete.
- If the desired automation doesn't start working, press and hold the button for at least 8 seconds, the RED LED will begin flashing which indicates that the technology has been enabled, trying to insert the new code on the related receiver WHY SYNC . At the end of this automatic procedure the RED LED will turn off. Enter the MASTER PIN and press the desired button to check if the automation activates. If it does, the procedure is concluded, if not, it means the receiver is unable to receive any additional code via "radio" mode. In this case, refer to the instruction manual of the automation installed and follow the procedure for adding new remote controls manually.



**NOTE: THE SEED CODE FROM THE KEYPAD CAN BE TRANSMITTED AS FOLLOWS:**

- Enter the MASTER PIN
- Press buttons 1 and 2 simultaneously for at least 4 seconds and release both when the RED LED begins to flash
- Within 10 seconds press the button required to transmit its seed code.



**ERROR MESSAGE**

If during SETTING or MODIFYING a PIN the PIN is entered incorrectly for any reason, or an already existing PIN is in the system, thus non-usable, the Keypad indicates the error by emitting a pulsed sound with the GREEN LED lit constantly while the RED LED flashes rapidly. This error message can also be given in case of mistakes during the radio code setting procedures.

**DAILY USE**

To light up the Keypad press any button for at least 3 seconds.  
To activate the Keypad for usage, enter any of the PIN's set: the GREEN LED illuminates constantly to indicate that the Keypad is unlocked.  
If a wrong PIN is entered, simply repeat the procedure and enter a correct PIN.  
Once the Keypad has been unlocked you have 6 seconds to press the button which controls the function you require. The RED LED will illuminate and a short sound indicates the code is being transmitted. After transmitting, the keypad stays unlocked for a further 6 seconds to allow the user to send another command if desired.  
NOTE: The MASTER PIN is always enabled to send any of the codes stored into the keypad, while individual USER PIN's are only enabled to send the codes previously selected for that PIN. For example, a visitor may only be able to access the front gate and not necessarily the garage door.



**PASSWORD RESET**

In order to reset passwords:  
Open the lock with the key and separate it from the shell;  
press on A and B at the same time and take off the battery from the back;  
without releasing the buttons, insert one again the battery and wait for 15 seconds.  
You will hear a sound and all buttons will switch on in order to the confirm that the operation was been successfully.

# COMPATIBILITY LIST

## LEGEND:



WHY SYNC TECHNOLOGY



ACT ON THE RECEIVER



DIRECT FUNCTIONING

<b>ACM</b> TX2, TX2 COLOR, TX4		<b>DITEC/ENTREMATI</b> BIXLP, GOL4, BIXLG, ZEN		<b>NICE</b> SMILO, FLOR-S, VERY-VR, FLOR-S ERA, ONE (ON), ON ERA, INTI, ERGO, PLANO, ONE (ON FM)		<b>STAGNOLI</b> KALLISTO, VENUS AV223	
<b>ADYX</b> TE4433H BLUE, 433-HG BRAVO		<b>DOORHAN</b> TRANSMITTER 4		<b>NORMSTHAL</b> RCU 2/4 K, EA 433 2/4 K		<b>TAU</b> 250K-SLIMRP, 250K-SLIMR, 250T-4RP	
<b>AERF</b> COMPACT, HY-DOM, MERCURI B, MERCURI C, SABUTON, MARS, SATURN, ST3/N, TERRA, TMP-1, TMP-2, UNITECH		<b>DOORMATIC</b> MILENY, MILENY-EVO		<b>NORTON</b> NEO, TXCD		<b>TELCOMA</b> FM400E, FM400	
<b>ALLMATIC</b> BROWN, BROWN RED, BRO.OVER, PASS, MINIPASS, TECH3, FOR4		<b>ECOSTAR</b> RSC, RSE, RSZ		<b>NORTON</b> GO NORTON, GO MINI NORTON		<b>TOR LIFT</b> TORMIT4	
<b>APERIO</b> GO, GO PRO, GO MINI		<b>ERREKA</b> IRIS, ROLLER 2, ROLLER 433, ROLLER 868, SOL433, SOL868, VEGA 433, VEGA 868		<b>NOVOFERM</b> MCHS, MICRO-NOVOTRON 502, MINI-NOVOTRON 504, MICRO-NOVOTRON 502, MICRO-NOVOTRON 504, MICRO-NOVOTRON 31, MICRO-NOVOTRON S1, MINI-NOVOTRON 30, MINI- NOVOTRON 50, MNHS, MINI NOVOTRON 522		<b>V2</b> TSC, TXC, TRC, HANDY, PHOENIX, PHOX 433, PHOENIX 868, PHOX 868	
<b>APERTO (Sommer)</b> 4020-TX03-434, TX02-434-2, TX02-868-2		<b>FAAC</b> TML 433SLH, DL 868 SLH, XT 868 SLH, XT 433 SLH, T 868 SLH, T 433 SLH, XT 868 SLH BLACK, XT 433 SLH BLACK		<b>O&amp;O</b> TX, T.COM R4-2, T.COM R8-2, TWIN, TX (NEO)		<b>VDS</b> ECO-R, TRQ P	
<b>APRIMATIC</b> TR, TM4, TXM		<b>FAAC</b> XT 433 RC, TE433HG, XT4 433 RCBE		<b>PRASTEL</b> MTE, MPSTLE, MPSTP2E, TCE, BFOR, TRQ-P, SLIM-E			
<b>AVIDSEN</b> 104251, 104250, 104250 OLD, 104250 RED, 104257, 104350, 654250, TX4 114253		<b>FADINI</b> JUBI-SMALL, JUBI 433, DIVO 71/4		<b>PUJOL</b> TWIN, VARIO, VARIO MARS, VARIO OCEAN, NEO			
<b>BALLAN</b> FM400, FM400E		<b>GENIUS</b> AMIGO JA332-JA334 868, AMIGOLD 868, KILO 433 JLC, KILO 868 JLC		<b>RIB</b> LITHIO			
<b>BENINCA</b> TO, GO, WV, TWV, ROLLKEY, APPLE, LOT WCV, CUPIDO, TO.GO, QV, HAPPY VA		<b>GENIUS</b> BRAVO, ECHO		<b>ROPER</b> NEO			
<b>BENINCA</b> IO, TO.GO, VA		<b>GIBIDI</b> AU1600, AU1600 WOOD, AU1680, AU1680 WOOD, DOMINO, MAKO		<b>ROPER</b> GO ROPER, GO MINI ROPER			
<b>BFT</b> MITTO, MITTO M, MITTO RCB, MITTO A, TRC, GHIBLI, MURALE, KLEIO		<b>JCM</b> NEO, TWIN		<b>SABUTOM</b> BROOVER, BROSTAR			
<b>CARDIN</b> TRQ S449, TRQ S449 GREEN (PRECODE), TXQ S449, TXQ S449 GREEN, TRQ S486, TXQ S486, S437 TX, XRADO		<b>JCM</b> GO, GO PORTIS, GO NORTON, GO MINI		<b>SEAV</b> BE HAPPY RS, BE SMART			
<b>CASALI</b> GENIUS/CASALI A252RC		<b>KBLUE</b> ETH-TEL01		<b>SECULUX</b> NEO			
<b>CHAMBERLAIN/LIFT MASTER/MOTOR LIFT</b> 953ESTD, 371 LM, 971LM, 84330E, 94334CE, 94333E/94334E/94335E, 9747E, 1A5639-7 ,1A5477,1A6487,132B2372, 94330EM- L/9333EML/94335EML, 84330EML/84333EM- L/84335EML, 8747EML		<b>KEY</b> 900TXB-42R, TXB 44R, SUB 44R		<b>SILVELOX</b> Mhz 2007, QUARZ SAW			
<b>CLEMSA</b> MUTANCODE, T, T-8, E-CODE N		<b>KING GATES</b> CLIPPER, STYLO		<b>SIMINOR</b> CVXNL, MITTO			
<b>CLEMSA</b> Attenzione! Codice Fisso MASTERCOD MV		<b>KLING</b> KUA, KUA E, KUA S		<b>SIMINOR</b> SIM433			
<b>DASPI</b> ZERO RC		<b>LABEL</b> SPYCO		<b>SOMFY</b> K-EASY, K-EASY NEW, K-EASY OLD, MITTO, KEY GO RTS, TELIS RTS, KEYTIS RTS, KEYTIS RTS NS, ALARMA			
<b>DEA SYSTEM</b> PUNTO 278, GOLDR, GENIE R 273, GENIE R-GT2M, MIO TR, GT2M, TRN		<b>LIFE</b> FIDO		<b>SOMMER</b> 4010, 4011, 4014 TX03-434-2, 4013 TX03-434-4, 4020 TX03-868-4, 4026 TX03-868-2, 4022 TX02-434-2, 4025 TX02-868-2, 4031 TX08-868-4			
		<b>MHOUSE</b> TX3, TX4, GTX4					
		<b>MOOVO</b> MT4G					

### WHY SYNC TECHNOLOGY

Close to the automation and before using the original remote control, press and hold pressed the button on the WHY EVO remote control until the LED starts to flash. Wait for the end of the flashing.

### ACT ON THE RECEIVER

Close to the automation and before using the original remote control, press and hold pressed the PRG or PGM button in the receiver; then press the button of WHY EVO remote control.

### DIRECT FUNCTIONING

Close to the automation and before using the original remote control, press the button of WHY EVO remote control for 4/5 times.